



VALLEY WAY,
MILPITAS,
CALIFORNIA

Commercial Land For Sale



Exclusively Listed by

Ryan Warner

DRE# 01397580

RWarner@moinc.net

(408) 378-5900

MEACHAM/OPPENHEIMER, INC.

CORFAC INTERNATIONAL

8 No. San Pedro St., Suite 300

San Jose, California 95110

Tel: 408.378.5900

Fax: 408.378.5903

www.moinc.net

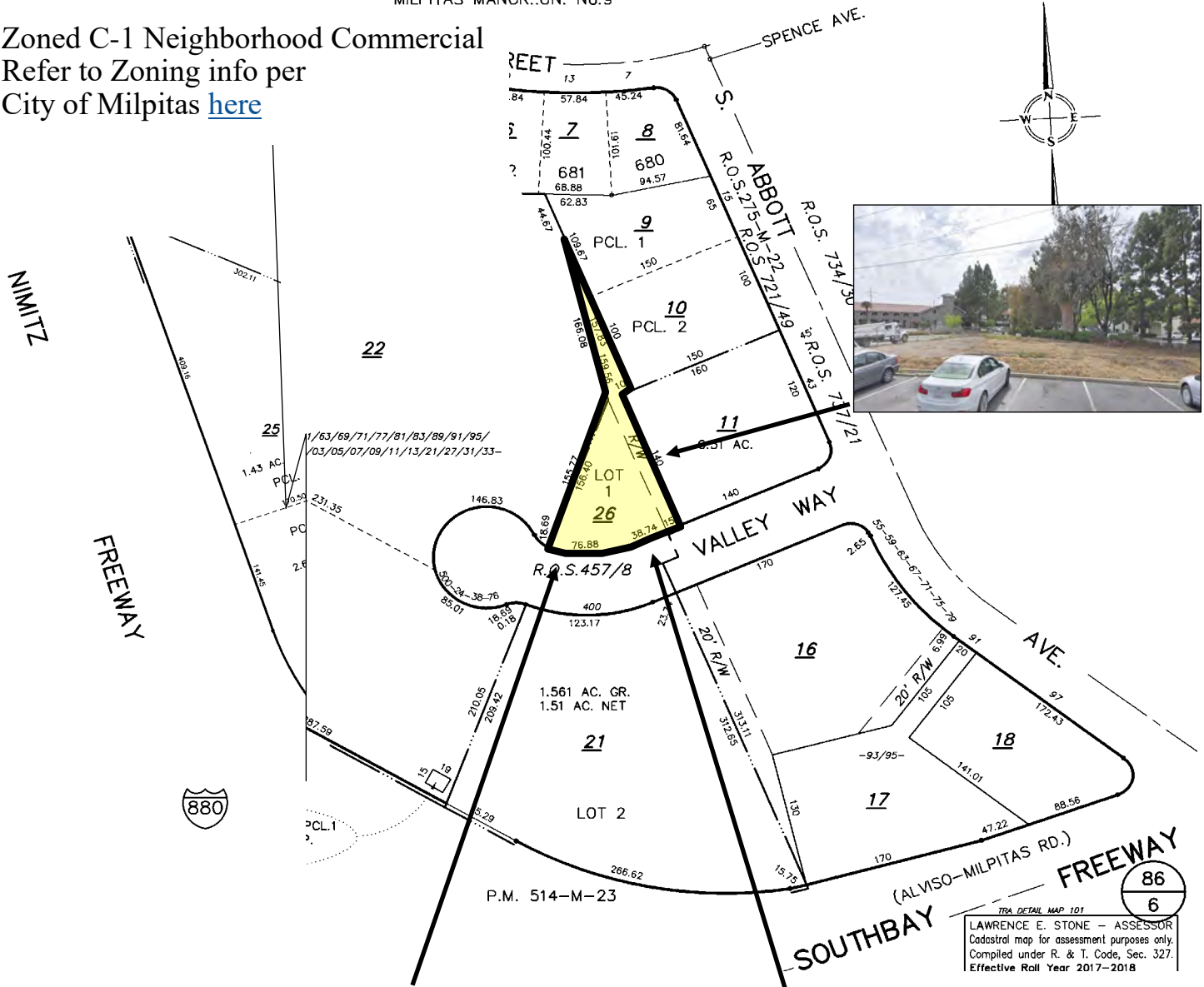
- 12,458± SF Parcel
- Zoned C1 (Neighborhood Commercial District)
- APN 022-28-026
- Development Opportunity for Owner/User or Investor
- Valley Way off Abbott Ave. Near Hwy 237 & I-880
- Sale Price \$935,000/ \$75.00 PSF

The information contained herein has been obtained from sources we deem reliable. We cannot, however, assume responsibility for its accuracy.

Valley Way • Milpitas, California

TRACT No. 2816
MILPITAS MANOR..UN. No.9

Zoned C-1 Neighborhood Commercial
Refer to Zoning info per
City of Milpitas [here](#)



TRA DETAIL MAP 101
LAWRENCE E. STONE - ASSESSOR
Cadastral map for assessment purposes only.
Compiled under R. & T. Code, Sec. 327.
Effective Roll Year 2017-2018

MEACHAM/OPPENHEIMER, INC.
CORFAC INTERNATIONAL
8 No. San Pedro St., Suite 300
San Jose, California 95110
Tel: 408.378.5900
www.moinc.net

Ryan Warner
Lic. #01397580
rwarn@moinc.net
(408) 378-5900