

TENNANT STATION SHOPPING CENTER UNITS AVAILABLE FOR LEASE



159-890 Tennant Station, Morgan Hill, CA

Bobby Facchino

Associate

Lic. #02178873

bobby@moinc.net

(408) 318-0623





- Units Available for Lease:

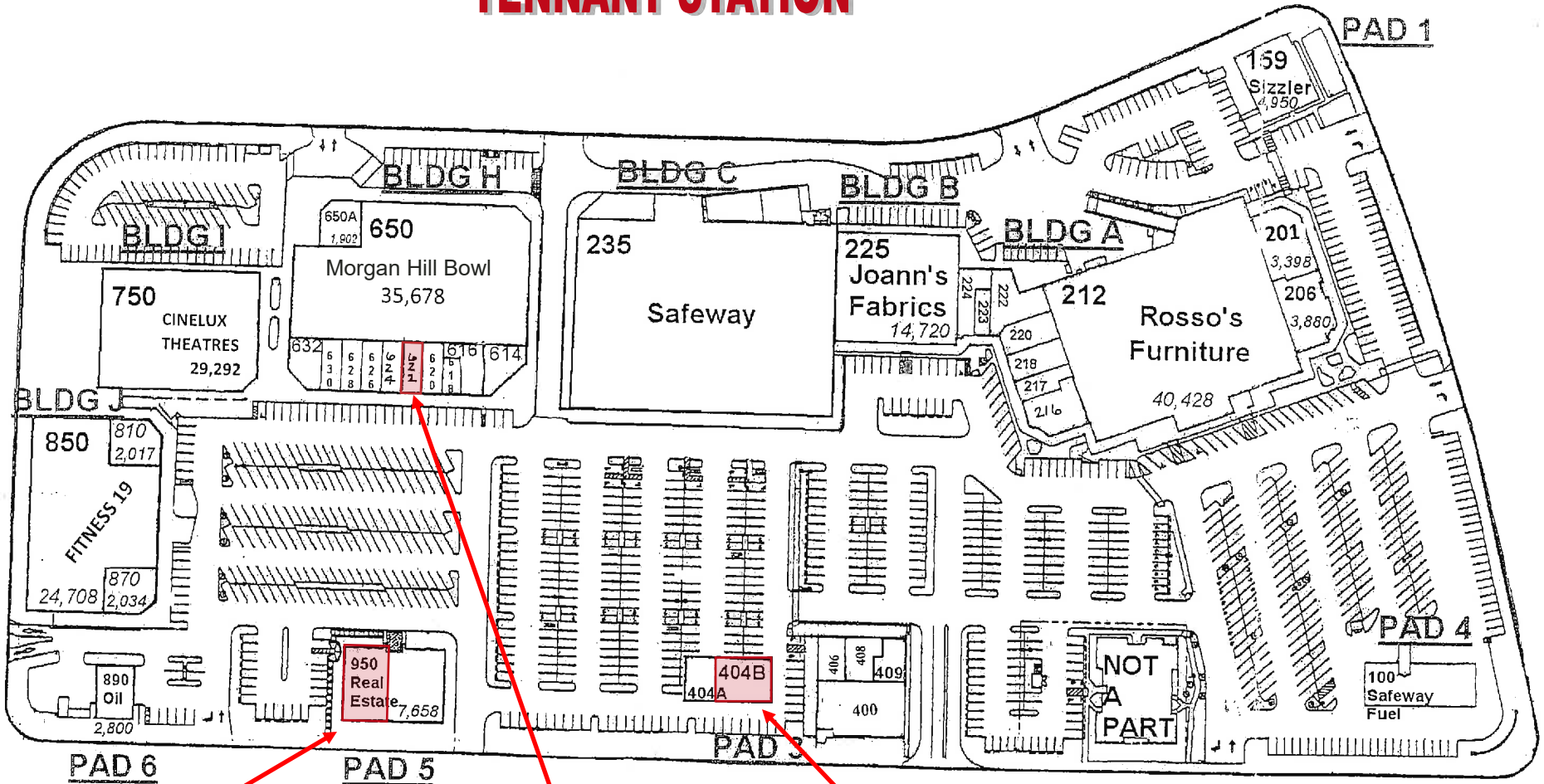
- Unit 950: 3,032± SF
- Unit 622: 1,091± SF
- Unit 404B: 2,153± SF

- Rent: \$3.25, plus NNN (\$0.57)

- High Daily Traffic Counts:

- Tennant Ave: 27,300+ ADT
- Monterey Rd: 22,000+ ADT

TENNANT STATION



UNIT 950
3,032± SF

UNIT 622
1,091± SF

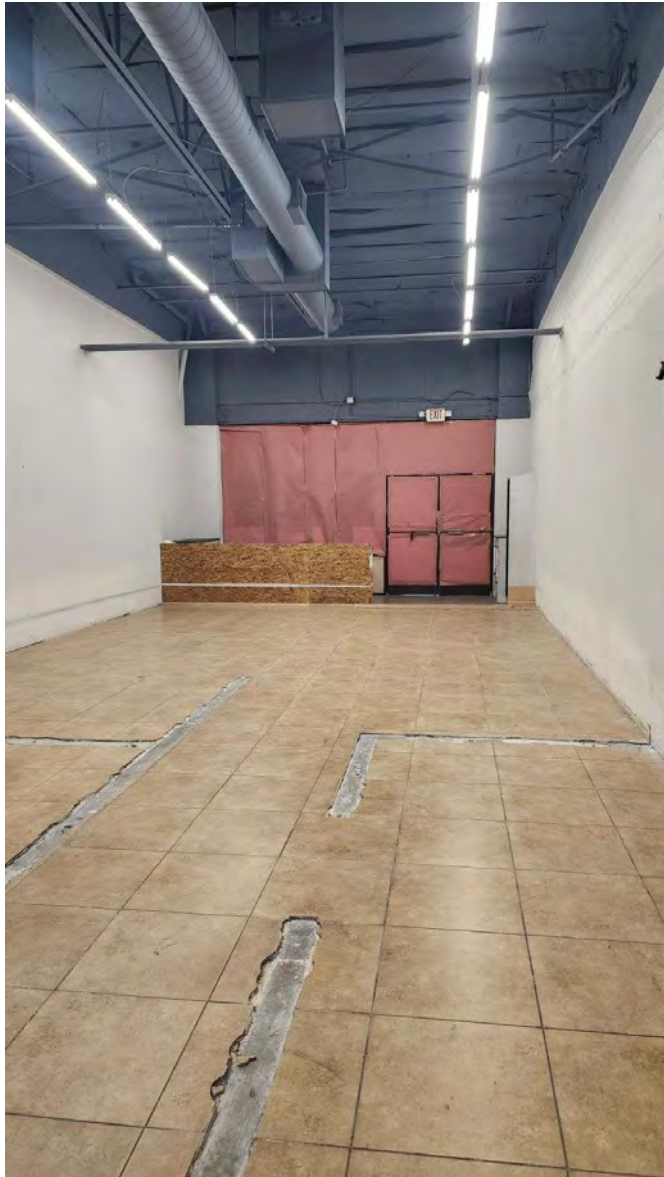
UNIT 404B:
2,153± SF

PHOTOS: UNIT 950 3,032± SF



The information contained herein has been obtained from sources we deem reliable. We cannot, however, assume responsibility for its accuracy.

PHOTOS: UNIT 622 – 1,091± SF



PHOTOS: UNIT 404B - 2,153± SF



The information contained herein has been obtained from sources we deem reliable. We cannot, however, assume responsibility for its accuracy.

AREA MAP



The information contained herein has been obtained from sources we deem reliable. We cannot, however, assume responsibility for its accuracy.

DEMOGRAPHICS



2023 SUMMARY	1-MILE	3-MILE	5-MILE
Population	11,936	48,161	60,191
Households	4,020	15,857	19,645
Average Household Size	2.92	2.99	3.02
Owner Occupied Housing Units	2,105	10,789	13,924
Renter Occupied Housing Units	1,915	5,068	5,721
Median Age	34.5	38.3	39.2
Median Household Income	\$117,700	\$142,022	\$146,351
Average Household Income	\$164,504	\$193,032	\$198,350

The information contained herein has been obtained from sources we deem reliable. We cannot, however, assume responsibility for its accuracy.



159-890 Tennant Station

For More Information Contact:

Bobby Facchino

Associate

Lic. #02178873

bobby@moinc.net

(408) 318-0623

MEACHAM/OPPENHEIMER, INC.
8 N San Pedro St. #300
San Jose, CA 95110
Tel. 408.378.5900
www.moinc.net

