

**RIVERHILL PLAZA**  
**1008 BLOSSOM HILL RD.**  
**SAN JOSE,**  
**CALIFORNIA**

## **PRIME RETAIL ALONG MAJOR SOUTH SAN JOSE THOROUGHFARE**



### **PROPERTY HIGHLIGHTS:**

- Suite G: 1,150± SF± Available September 1, 2024
- Suite A: 1,820± SF Hair Salon with 14 Stations
- Co-Tenants: Crossroads Trading, Wells Fargo Bank, and Togo's
- Traffic Count 24,000+ ADT
- Located Across from 1.1 Million Square Foot Westfield Oakridge Mall, featuring Target, Macy's Living Spaces and Century Theaters
- Easy Access Into Center From Both Directions
- Asking \$3.50, plus NNN
- Available w/ 60 Day Notice
- DO NOT DISTURB TENANTS

**FOR MORE INFORMATION CONTACT:**

**Ryan Warner**  
Lic. #01397580  
**[rwarners@moinc.net](mailto:rwarners@moinc.net)**  
**(408) 477-2505**



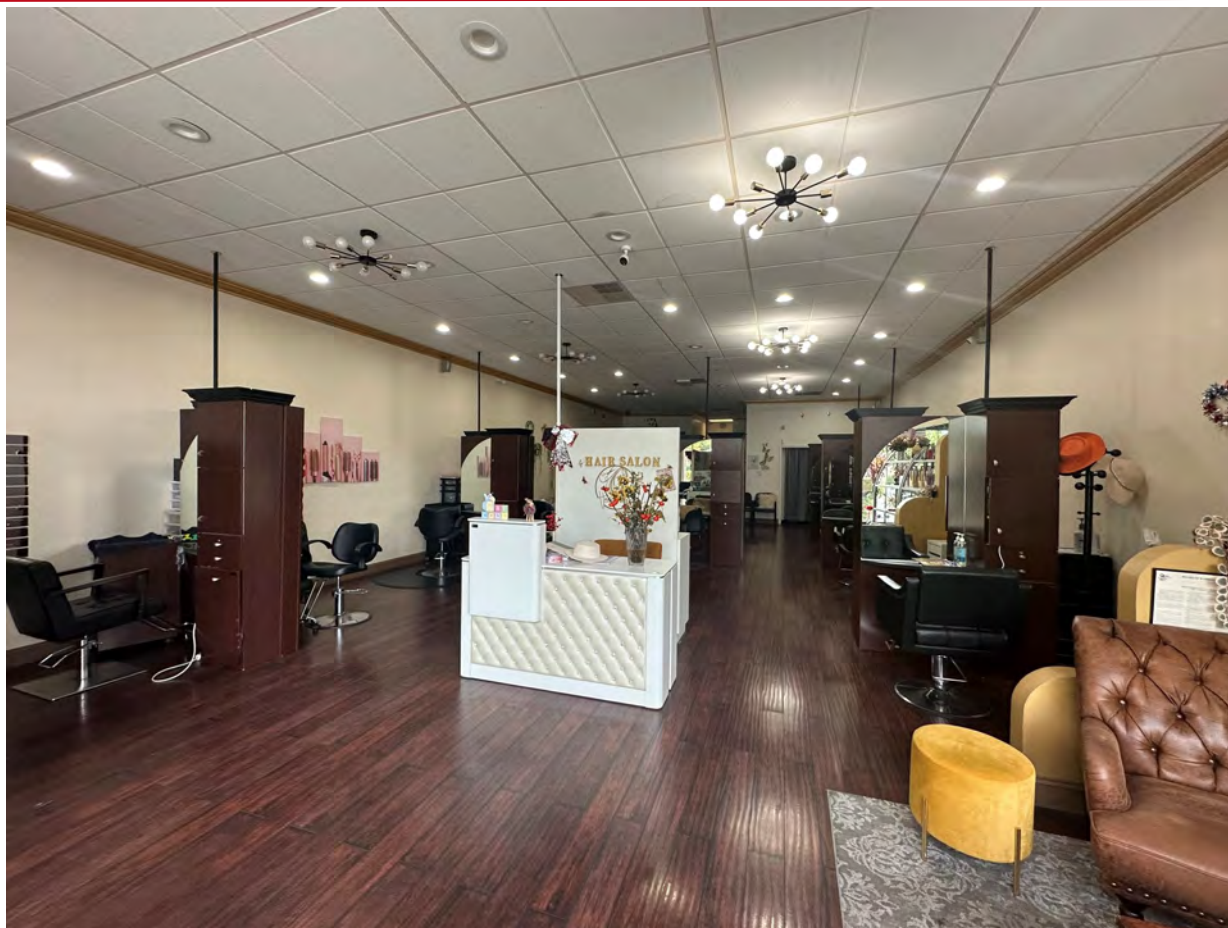
Meacham/Oppenheimer, Inc.  
8 N. San Pedro St., Suite 300  
San Jose, California 95110  
Tel: 408.378.5900  
[www.moinc.net](http://www.moinc.net)

# SITE PLAN





# INTERIOR PHOTOS: SUITE A - 1,820± SF



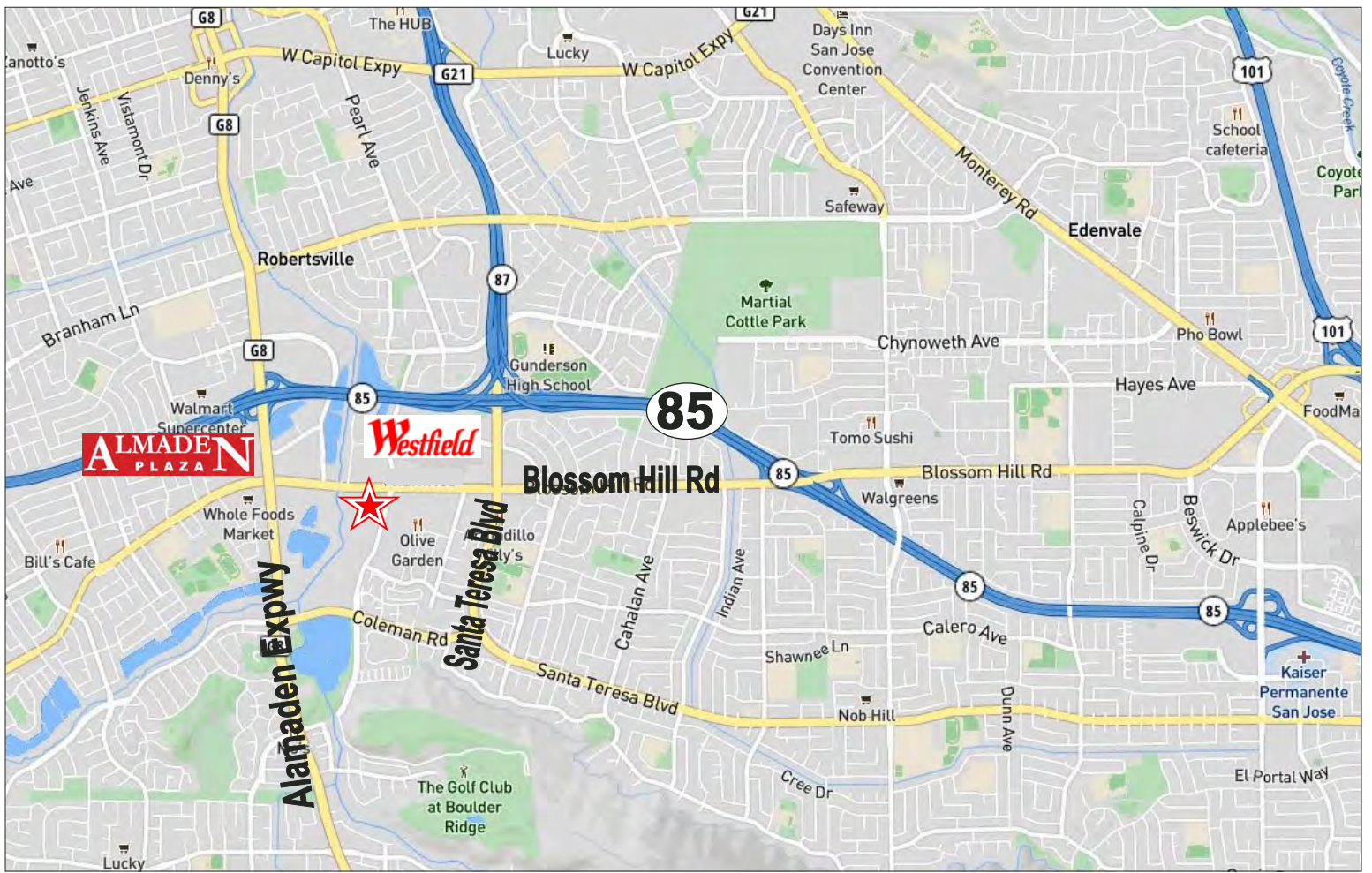
The information contained herein has been obtained from sources we deem reliable. We cannot, however, assume responsibility for its accuracy.



# SURROUNDING RETAIL







## DEMOGRAPHICS

2024 SUMMARY	1-MILE	3-MILE	5-MILE
<b>Population</b>	23,290	199,627	449,273
<b>Average HH Income</b>	\$153,385	\$197,444	\$187,874
<b>Businesses</b>	1,069	4,794	14,179
<b>Employees</b>	12,409	39,144	130,625



Meacham/Oppenheimer, Inc.  
 8 N. San Pedro St., Suite 300  
 San Jose, California 95110  
 Tel: 408.378.5900  
 www.moinc.net

**RYAN WARNER**  
 Lic. #01397580  
 rwarner@moinc.net  
 408.477.2505