



Jack Holder

PARKING RESTRICTED  
24 Hrs. A DAY  
LOWED AWAY

# HACIENDA GARDENS SUITES AVAILABLE FOR LEASE

2825-3191 Meridian Ave, San Jose, California

The information contained herein has been obtained from sources we deem reliable. We cannot, however, assume responsibility for its accuracy.

# 2825-3191 Meridian Ave, San Jose, California

## Property Highlights:

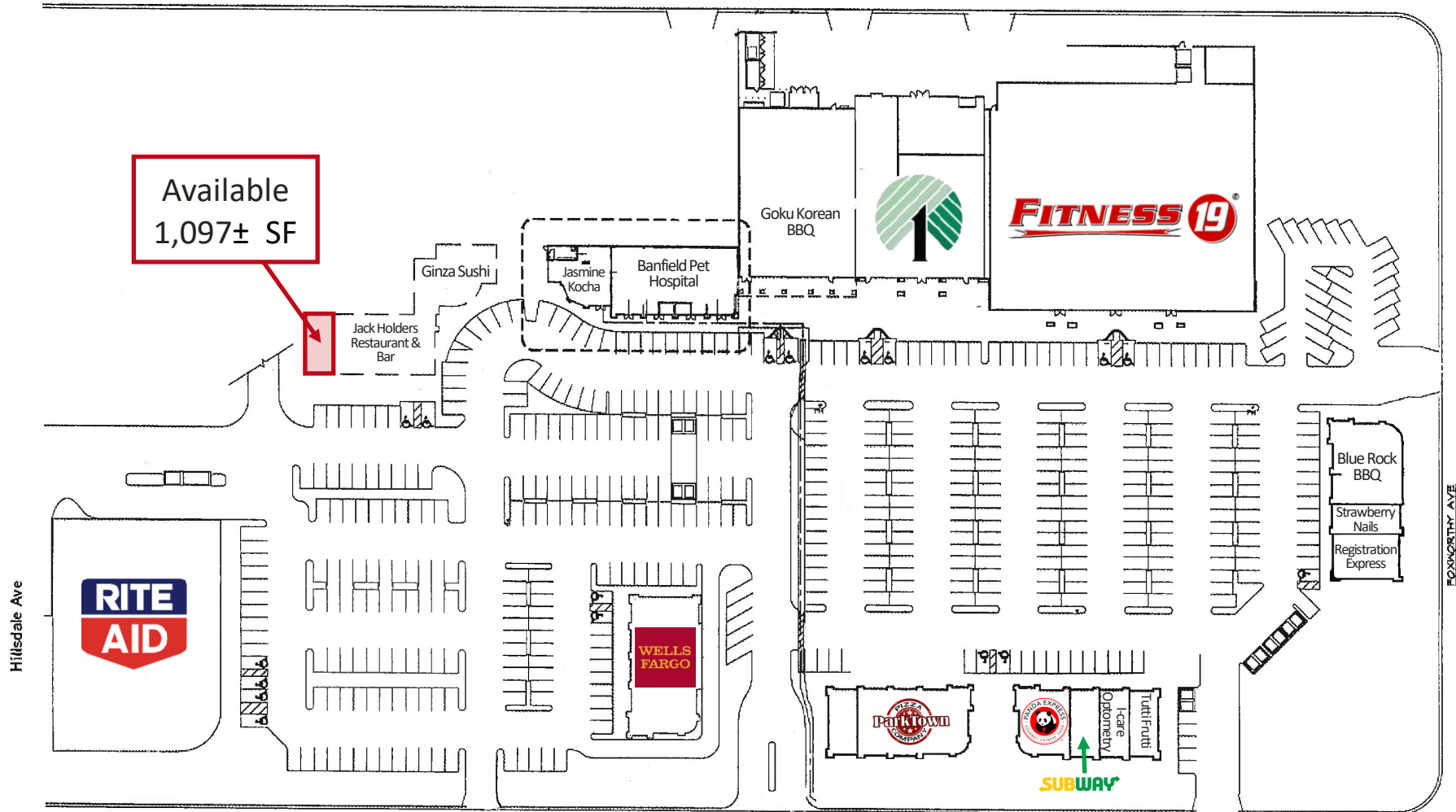
- Suite 3153 #60: 1,097± SF
- Rent: \$3.50, plus NNN (\$0.73)
- Co-Tenants Include: Rite Aid, Fitness 19, Dollar Tree, Subway, Panda Express, Parktown Pizza Company, Blue Rock BBQ, and More
- High Daily Traffic Counts:
  - Meridian Ave: 18,000+ ADT
  - Hillsdale Ave: 22,500+ ADT



The information contained herein has been obtained from sources we deem reliable. We cannot, however, assume responsibility for its accuracy.

# 2825-3191 Meridian Ave, San Jose, California

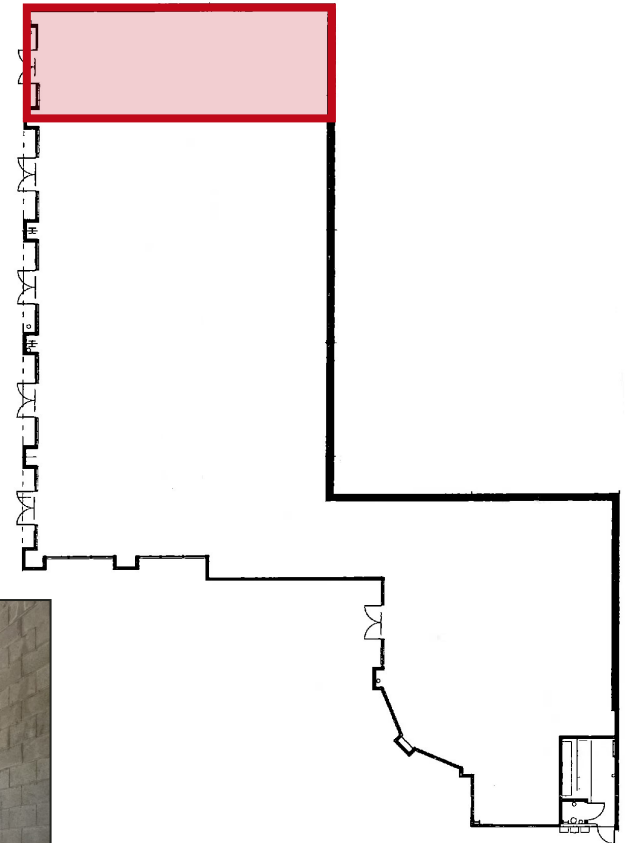
## HACIENDA GARDENS SITE PLAN



The information contained herein has been obtained from sources we deem reliable. We cannot, however, assume responsibility for its accuracy.

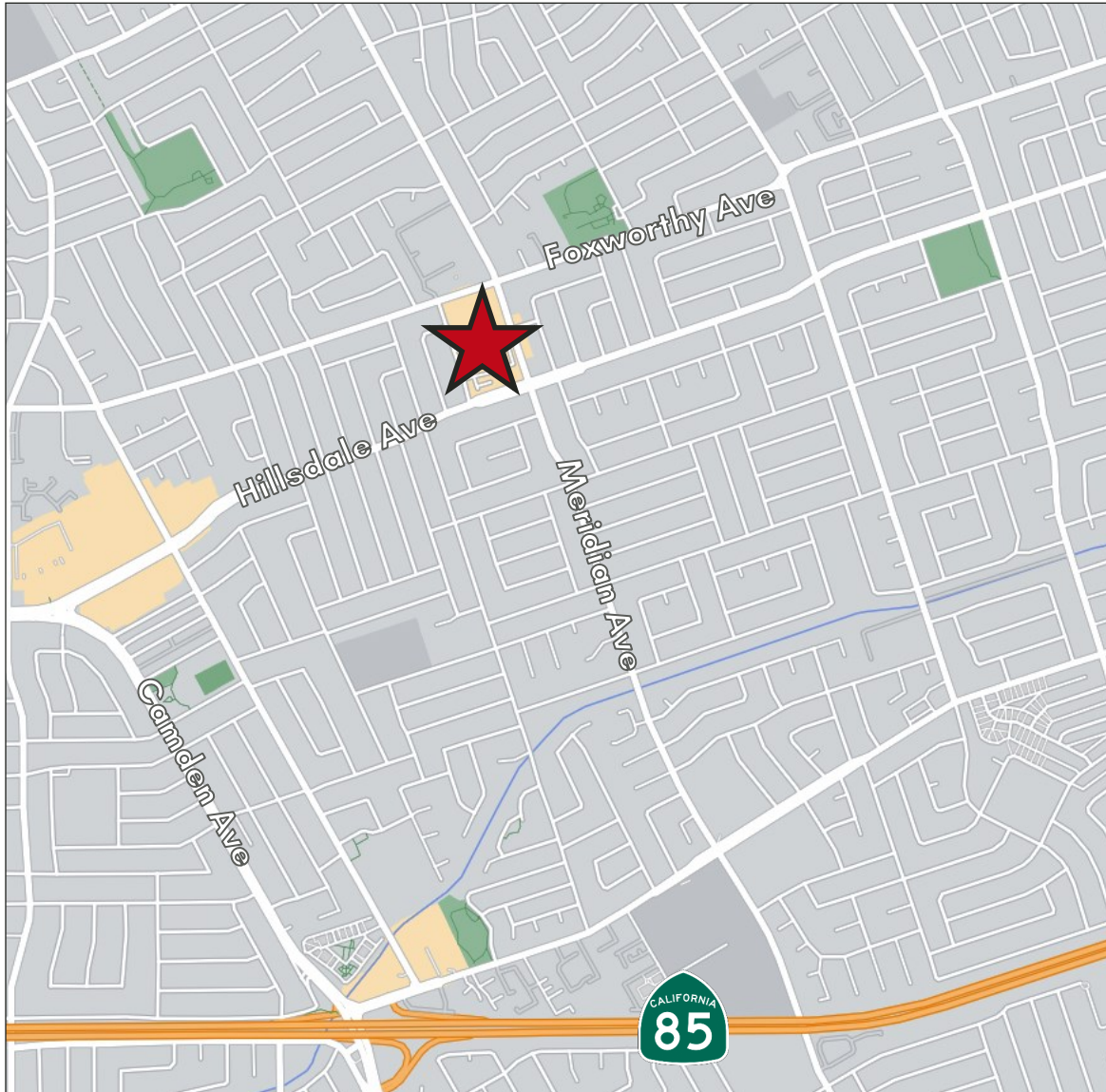
# 2825-3191 Meridian Ave, San Jose, California

## Suite 3153 | 1,097± SF



The information contained herein has been obtained from sources we deem reliable. We cannot, however, assume responsibility for its accuracy.

# 2825-3191 Meridian Ave, San Jose, California



## AREA DEMOGRAPHICS

	1 MI.	3MI.	5 MI.
<u>2021 Population:</u>	24,765	208,294	548,935
<u>Avg. HH Income:</u>	\$196,109	\$169,103	\$160,987

**Bobby Facchino**

Lic. # 02178873

[\*\*bobby@moinc.net\*\*](mailto:bobby@moinc.net)

**(408) 318-0623**

The information contained herein has been obtained from sources we deem reliable. We cannot, however, assume responsibility for its accuracy.



**COMMERCIAL BROKERAGE | INVESTMENT SALES | PROPERTY MANAGEMENT**

8 No. San Pedro Street, Suite 300 San Jose, California 95110

Tel: 408.378.5900 [www.moinc.net](http://www.moinc.net)