

RETAIL SPACE FOR LEASE at BLOSSOM HILL PLAZA

1325-1341 Blossom Hill Road, San Jose California



Bobby Facchino

Lic. #02178873
bobby@moinc.net
(408) 318-0623

Keon Vossoughi

Lic. #01019117
keon@moinc.net
(408) 691-9776

David Taxin

Lic. #00983163
dtaxin@moinc.net
(408) 966-5919



AVAILABLE UNITS

UNIT 1341

- 2,793 ± SF
- \$1.45 PSF plus NNN (estimated at \$0.55)

UNIT 1339

- 13,052± SF
- Former Ace Hardware
- \$0.95 PSF plus NNN charges (estimated at \$0.55)

PROPERTY HIGHLIGHTS

- Building and Monument Signage
- Major Silicon Valley Thoroughfare
- Next to Princeton Plaza Mall and McDonald's
- High Traffic Location—ADT: 40,000+
- Excellent Parking
- Co-tenants Include Subway, Burger Pit, Nu Smile Dental and More...

INTERIOR PHOTOS - UNIT 1349



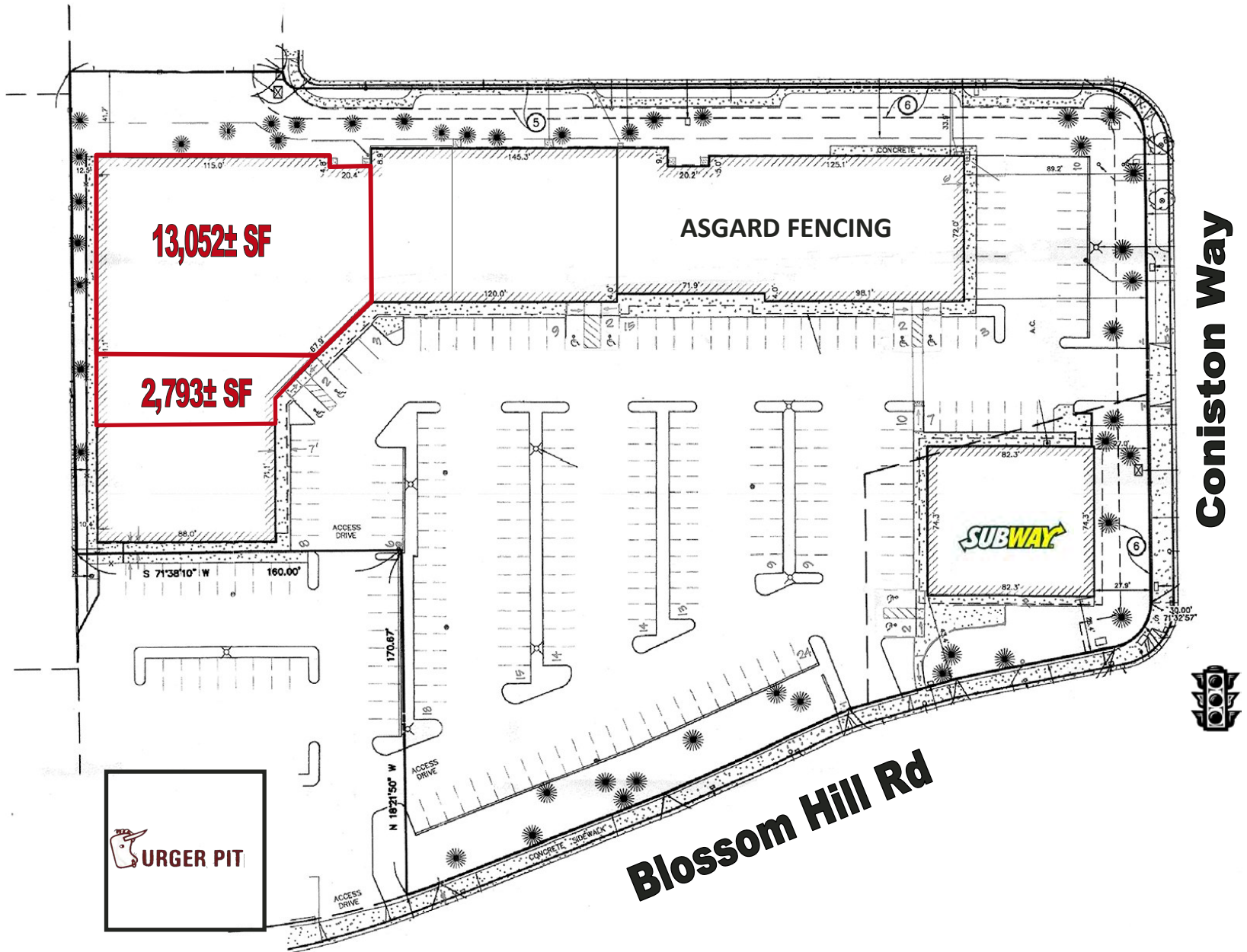
The information contained herein has been obtained from sources we deem reliable. We cannot, however, assume responsibility for its accuracy.

INTERIOR PHOTOS: FORMER ACE HARDWARE – UNIT 1339



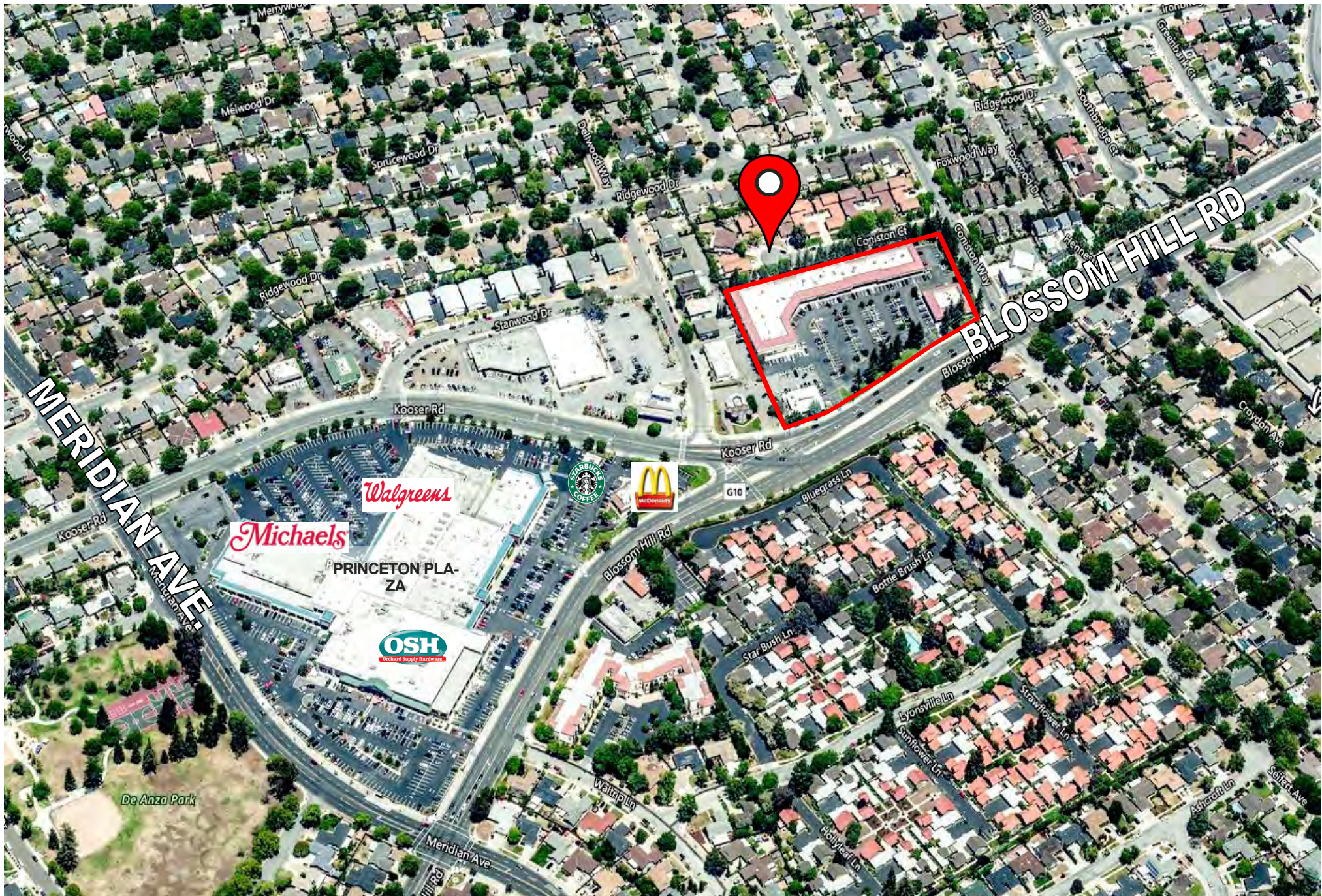
The information contained herein has been obtained from sources we deem reliable. We cannot, however, assume responsibility for its accuracy.

SITE MAP





LOCATION MAP



DEMOGRAPHICS



2023 SUMMARY	1-MILE	3-MILE	5-MILE
Population	23,901	173,431	442,046
Households	8,693	59,661	153,991
Average Household Income	\$173,537	\$209,843	\$191,657
Owner Occupied Housing Units	4,625	41,732	93,808
Renter Occupied Housing Units	4,068	17,929	60,183
Median Age	38.9	41.3	39.5
Median Household Income	\$122,212	\$162,270	\$138,524

The information contained herein has been obtained from sources we deem reliable. We cannot, however, assume responsibility for its accuracy.

RETAIL SPACE FOR LEASE at BLOSSOM HILL PLAZA

1325-1341 Blossom Hill Road, San Jose California



MEACHAM/OPPENHEIMER, INC.
8 N San Pedro St. #300
San Jose, CA 95110
Tel. 408.378.5900
www.moinc.net

Bobby Facchino
Lic. #02178873
bobby@moinc.net
(408) 318-0623

Keon Vossoughi
Lic. #01019117
keon@moinc.net
(408) 691-9776

David Taxin
Lic. #00983163
dtaxin@moinc.net
(408) 966-5919