

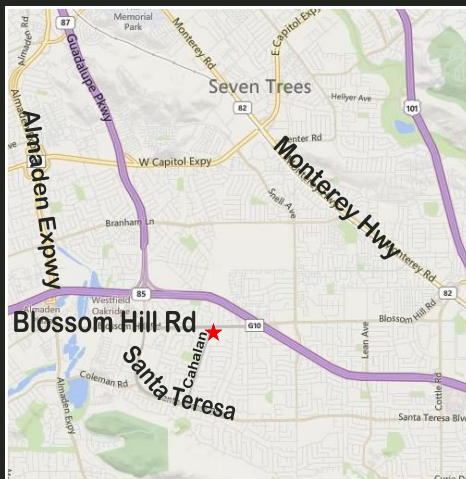
SUNRISE PLAZA
696 Blossom Hill Rd.
San Jose, California

New 20,000± SF Retail/Office/Medical Building
Coming Soon on Blossom Hill Rd.



PROPERTY INFORMATION:

- Two Story Building: 10,000± SF First Floor Retail, 9,300± SF Second Floor Office
- Great Parcel Size: 21,693± SF
- Hard-to-Find Signalized Corner Location
- Traffic Count: 32,000+ ADT
- Sunrise Plaza Tenants Include: Chavez Market, Pacific Sales, Dick's Sporting Goods, Outback Steakhouse, Juicy Burgers & Subway



ESTIMATED DEMOGRAPHICS:

	<u>1 MILE</u>	<u>3 MILES</u>	<u>5 MILES</u>
POPULATION:	22,814	210,742	414,917
AVG. HH INCOME:	\$104,410	\$107,573	\$111,911

FOR MORE INFORMATION CONTACT:

David Taxin
 Lic. #00983163
dtaxin@moinc.net
(408) 477-2508 Direct
(408) 378-5900



COMMERCIAL BROKERAGE | INVESTMENT SALES | PROPERTY MANAGEMENT

8 N. San Pedro Street, Suite 300 San Jose, California 95110
 Tel: 408.378.5900 www.moinc.net

SUNRISE PLAZA • 696 BLOSSOM HILL ROAD • SAN JOSE, CALIFORNIA

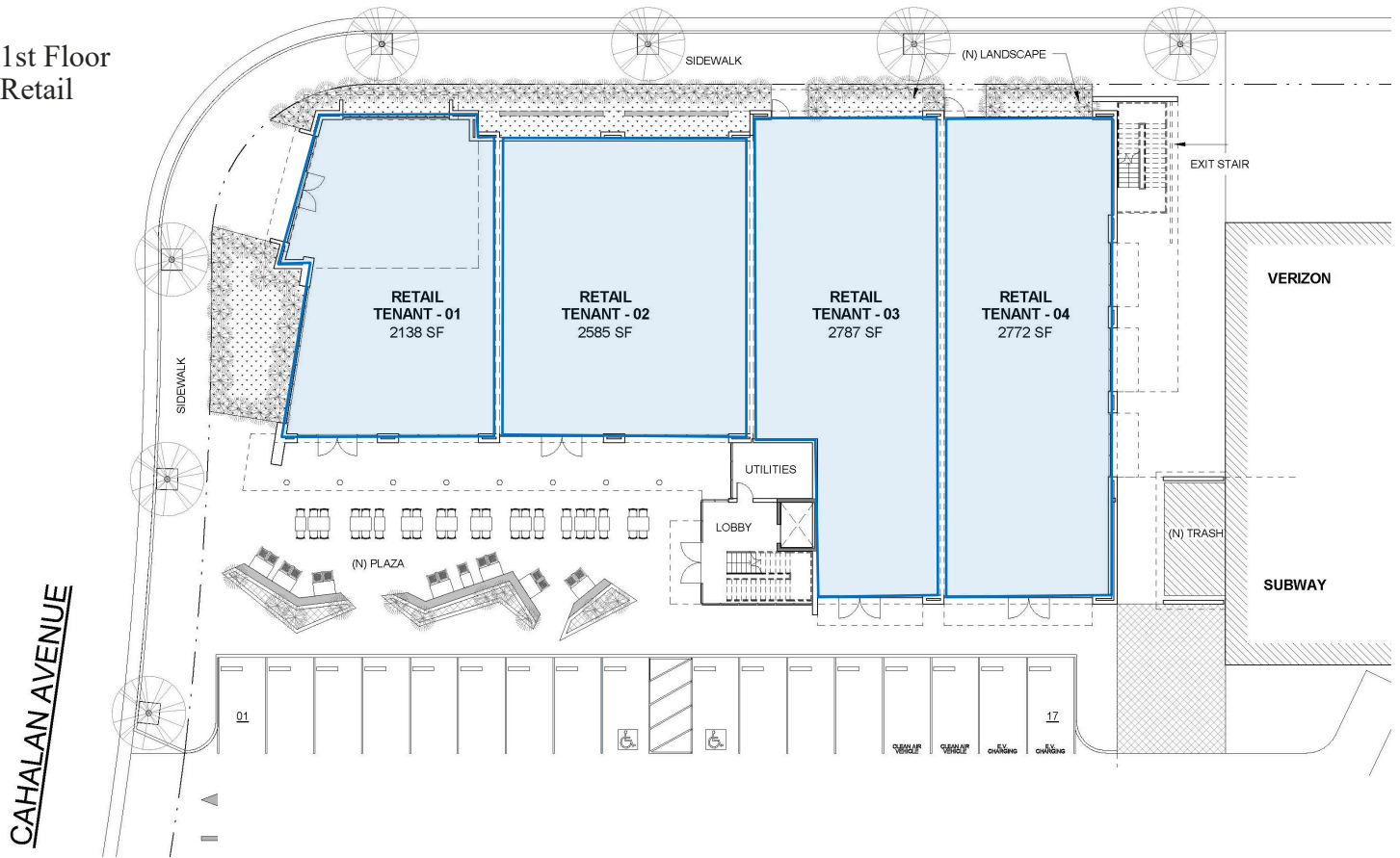
Elevations



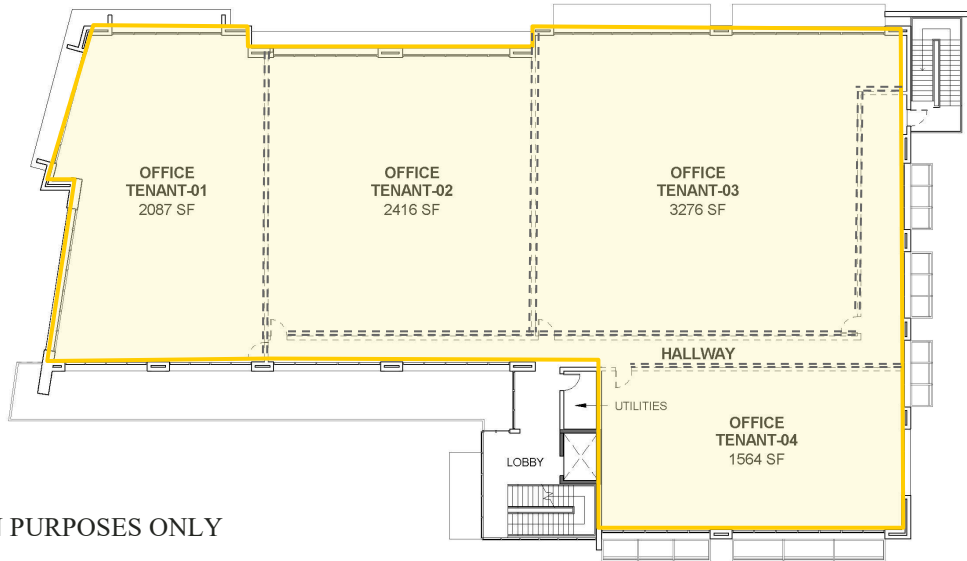
SUNRISE PLAZA • 696 BLOSSOM HILL ROAD • SAN JOSE, CALIFORNIA

Proposed Demising

1st Floor
Retail



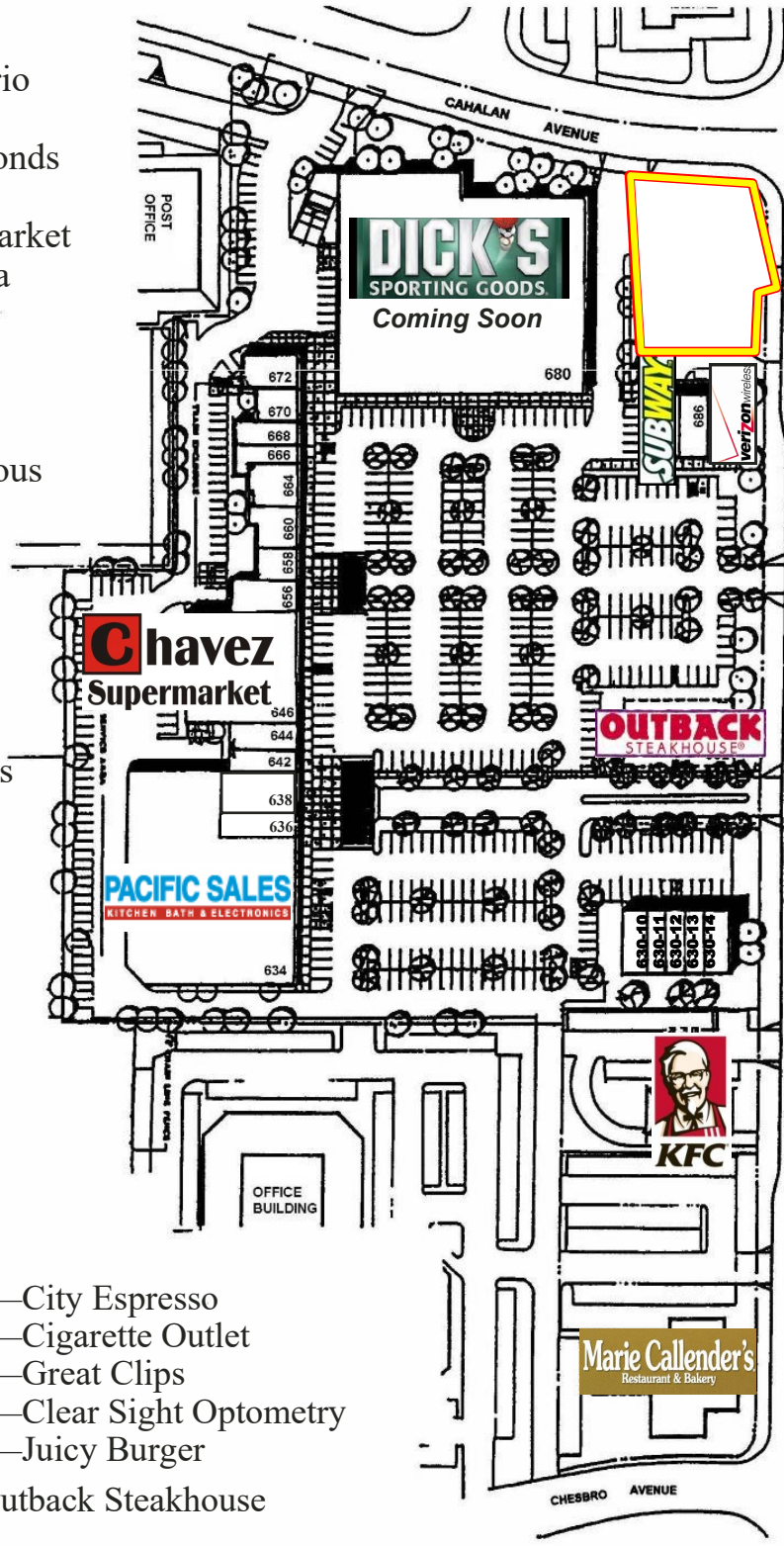
2nd Floor
Office



FOR DISCUSSION PURPOSES ONLY

SUNRISE PLAZA • 696 BLOSSOM HILL ROAD • SAN JOSE, CALIFORNIA

- 634—Pacific Sales
- 636—Apoyo Financiero
- 638—Express Pizza
- 642—Jewels & Diamonds
- 644—Sally Beauty
- 646—Chavez Supermarket
- 656—Chavez Taqueria
- 658—Fish & Chips
- 660—Beck Shoes
- 664—Shin Sushi
- 666—Elite Nails
- 668—Sweet Rendezvous
- 670—Bookkeeping
- 672—Dentist
- 680—Dick's Sporting Goods-
- 684—Subway
- 686—Chicago Title
- 690—Verizon Wireless



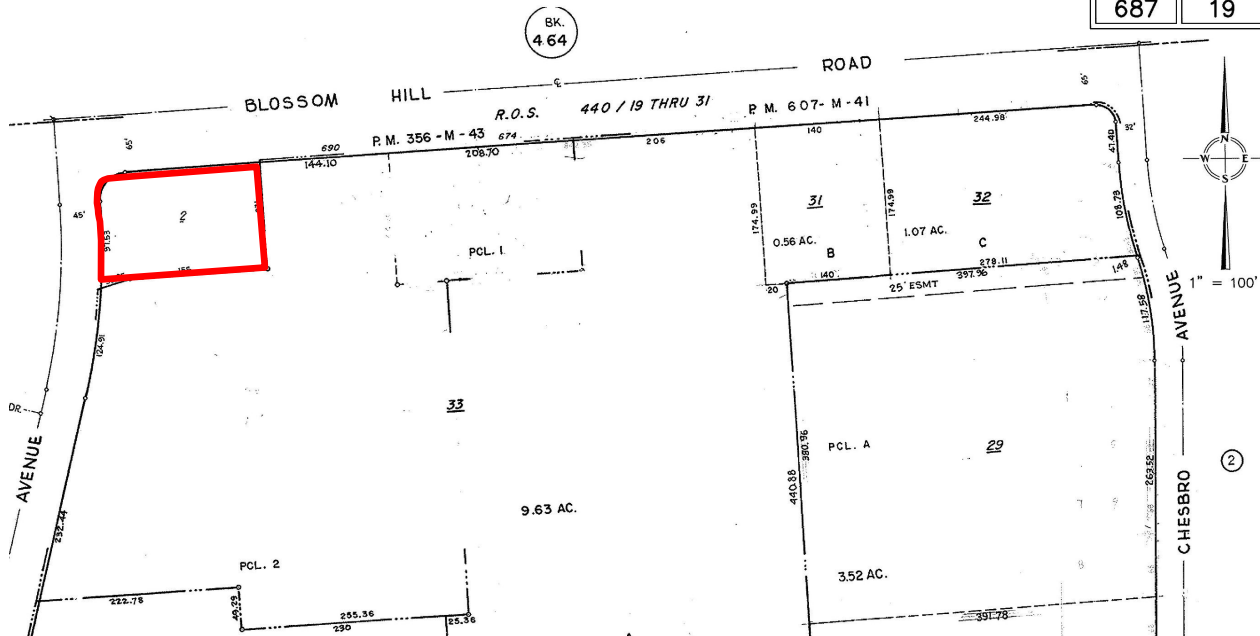
- 630-50—City Espresso
- 630-49—Cigarette Outlet
- 630-30—Great Clips
- 630-20—Clear Sight Optometry
- 630-10—Juicy Burger
- 632—Outback Steakhouse

SUNRISE PLAZA • 696 BLOSSOM HILL ROAD • SAN JOSE, CALIFORNIA



OFFICE OF COUNTY ASSESSOR — SANTA CLARA COUNTY, CALIFORNIA

BOOK 687	PAGE 19
--------------------	-------------------



SUNRISE PLAZA • 696 BLOSSOM HILL ROAD • SAN JOSE, CALIFORNIA

