



1 to 3 Acres Available with Retail/Office For Lease

2828 Monterey Road, San Jose, California



# 2828 Monterey Road, San Jose, California

- 2,850± SF Building
- 3 Acre Lot
- Divisible to 1 Acre Lots Which Can Be Combined Based on Use
- New Retail Building, with Showroom & Office
- High Visibility Signage Available
- Will Consider Short-Term Leases
- Monterey Road Traffic: 38,750+ ADT



The information contained herein has been obtained from sources we deem reliable. We cannot, however, assume responsibility for its accuracy.



# 2828 Monterey Road, San Jose, California



The information contained herein has been obtained from sources we deem reliable. We cannot, however, assume responsibility for its accuracy.



# 2828 Monterey Road, San Jose, California



The information contained herein has been obtained from sources we deem reliable. We cannot, however, assume responsibility for its accuracy.



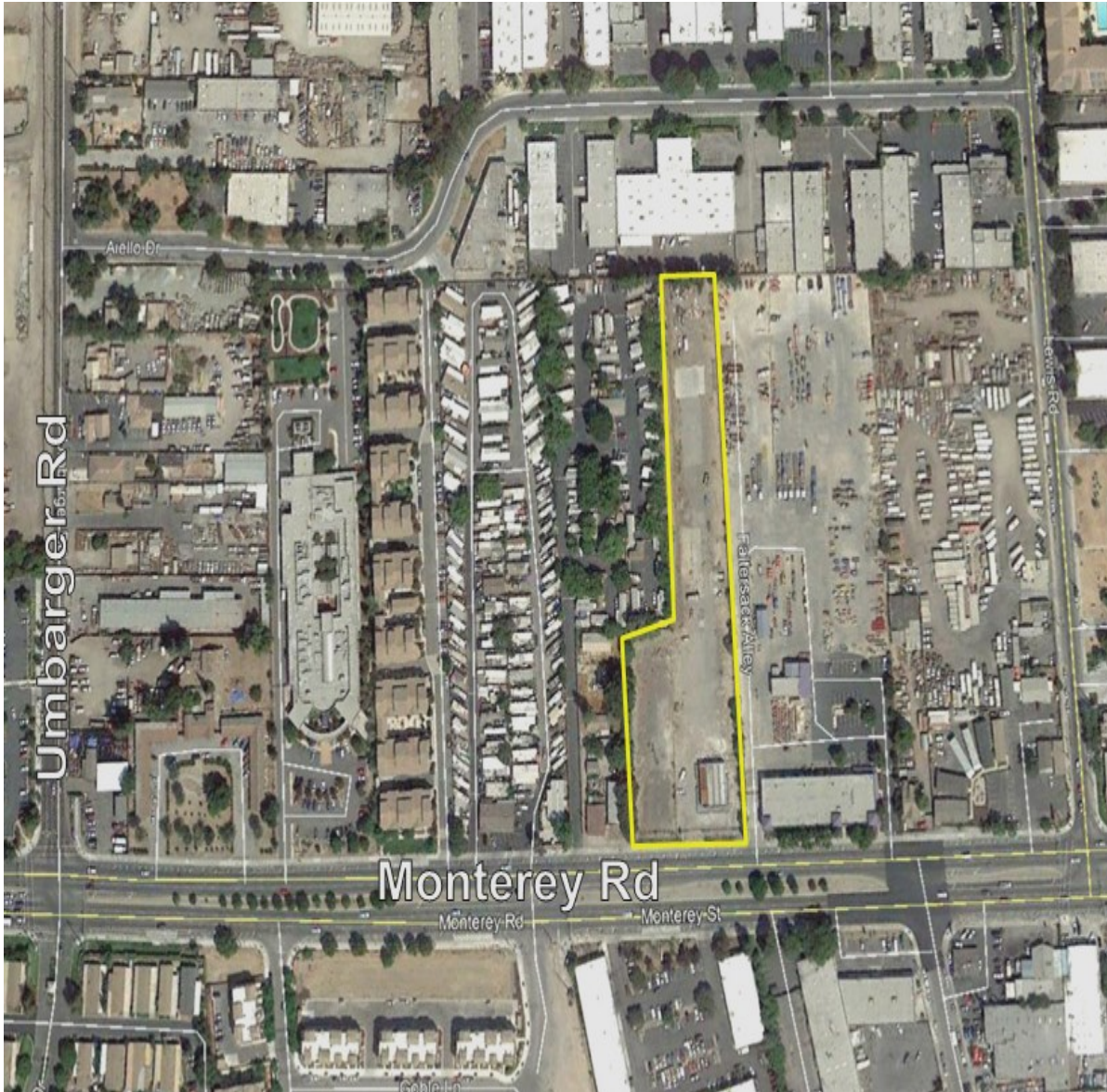
# 2828 Monterey Road, San Jose, California



The information contained herein has been obtained from sources we deem reliable. We cannot, however, assume responsibility for its accuracy.



# 2828 Monterey Road, San Jose, California



## AREA DEMOGRAPHICS

	1 MI.	3MI.	5 MI.
<u>2020 Population:</u>	27,132	250,935	669,253
<u>Avg. HH Income:</u>	\$109,616	\$127,036	\$139,962

**David Taxin**

Lic. #00983163

**DTaxin@moinc.net**

(408) 477-2508

**Jeremy Awdisho**

Lic. #02064232

**Jeremy@moinc.net**

**Cell: (650) 814-4510**



COMMERCIAL BROKERAGE | INVESTMENT SALES | PROPERTY MANAGEMENT

8 No. San Pedro Street, Suite 300 San Jose, California 95110  
Tel: 408.378.5900 [www.moinc.net](http://www.moinc.net)