

# 1,358± SF For Lease @ Bascom & Union



2590 S. Bascom Ave. Unit B, San Jose, CA

**Bobby Facchino**  
Associate  
+1 408 318 0623  
bobby@moinc.net  
Lic. 02178873

**Jeremy Awdisho**  
Vice President  
+1 650 814 4510  
jeremy@moinc.net  
Lic. 02064232

**David Taxin**  
Partner  
+1 408 966 5919  
dtaxin@moinc.net  
Lic. 00983163



# PROPERTY OVERVIEW



- ◇ Retail / Office Space: 1,358± SF
- ◇ Excellent Visibility and Wide Frontage in a Busy Shopping Center
- ◇ Monument and Building Signage Options
- ◇ ADA Restrooms

- ◇ Dedicated HVAC and Utilities for Units
- ◇ Parking 4/1,000 SF
- ◇ Rent \$2.75 PSF, Plus NNN
- ◇ High Traffic Intersection off Union Ave and S Bascom Ave



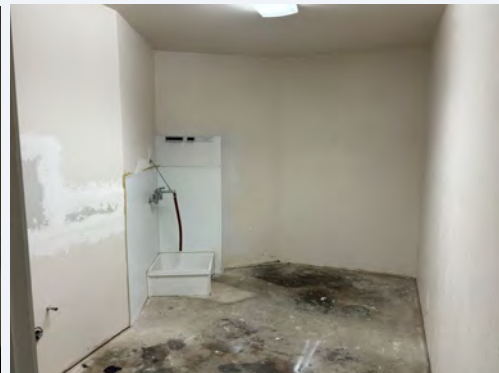
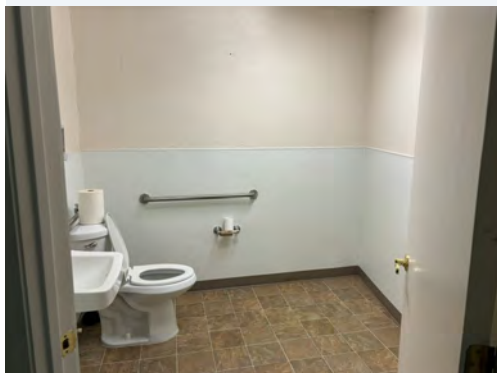
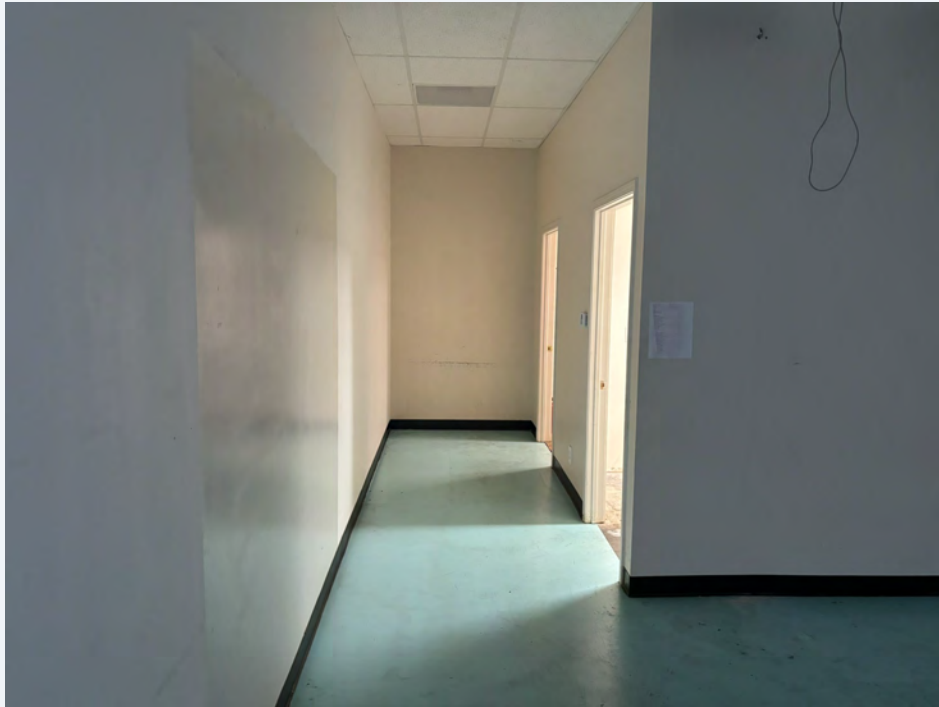
**Exterior Photo Unit B**  
**Retail / Office Space: 1,358± SF**  
**Rent \$2.75 PSF, Plus NNN**



The information contained herein has been obtained from sources we deem reliable. We cannot, however, assume responsibility for its accuracy.



**Interior Photos Unit B**  
**Retail / Office Space: 1,358± SF**  
**Rent \$2.75 PSF, Plus NNN**



# PROPERTY AERIAL



The information contained herein has been obtained from sources we deem reliable. We cannot, however, assume responsibility for its accuracy.



The information contained herein has been obtained from sources we deem reliable. We cannot, however, assume responsibility for its accuracy.

# DEMOGRAPHICS



2024	1-MILE	3-MILE	5-MILE
Population	22,944	222,058	531,791
Households	9,086	81,921	197,941
Average Household Income	\$187,565	\$193,745	\$196,289
Owner Occupied Housing Units	4,777	47,116	106,679
Renter Occupied Housing Units	4,309	34,805	91,262
Median Age	40.8	40.4	39.8
Median Household Income	\$137,702	\$148,766	\$144,560

2590 S. Bascom Ave. San Jose, CA



**Bobby Facchino**  
Associate  
+1 408 318 0623  
bobby@moinc.net  
Lic. 02178873

**Jeremy Awdisho**  
Vice President  
+1 650 814 4510  
jeremy@moinc.net  
Lic. 02064232

**David Taxin**  
Partner  
+1 408 966 5919  
dtaxin@moinc.net  
Lic. 00983163

MEACHAM/OPPENHEIMER, INC.  
8 N San Pedro St. #300  
San Jose, CA 95110  
Tel. 408.378.5900  
www.moinc.net

