

2 Available Spaces at Mary Manor Center

- Martial Arts/Studio • 1,643± SF
- Dry Cleaners • 2,561± SF

251 S Mary Avenue, Sunnyvale, CA

Matt Perez
Lic. #02017798
mperez@moinc.net
(408) 477-2516

Ryan Warner
Lic. #01397580
rwarner@moinc.net
(408) 477-2505



PROPERTY SUMMARY



- Available Spaces:
 - Unit 4 - 1,643± SF Former Judo Space
 - Unit 2 - 2,561± SF Dry Cleaners
- \$3.50 PSF, Plus NNN •
- Located Near New Apple Campus, Google and Linked-In Campuses
- Co-Tenants Include Hair Galleria, Chiropractor, Old Town Shanghai Restaurant, and Unique Dental Care
- Ample Parking
- High Visibility Corner Location

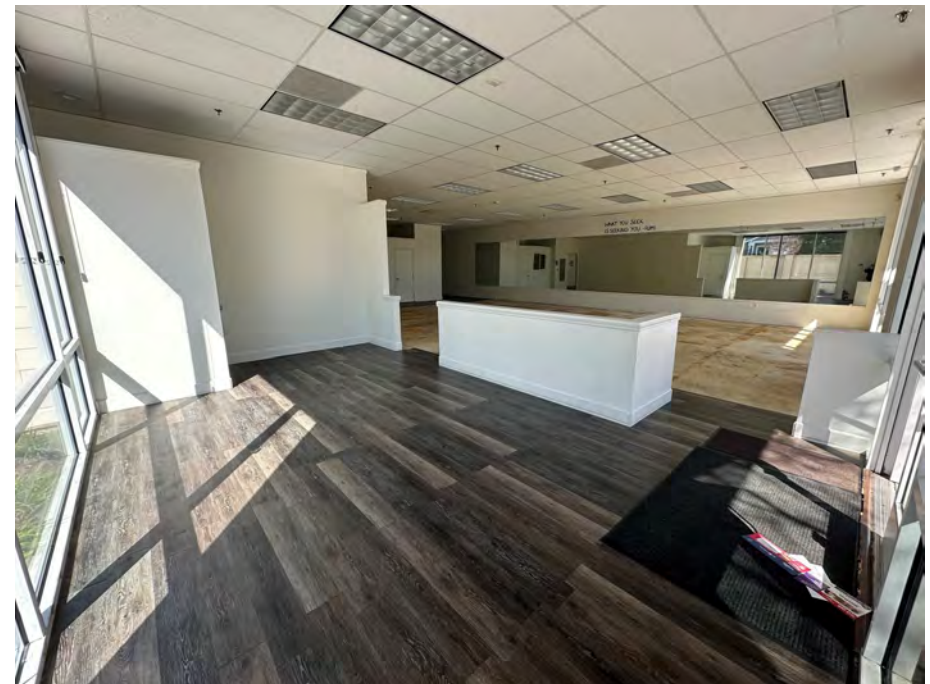
2024 ESTIMATED DEMOGRAPHICS

	1 Mile	3 Miles	5 Miles
Population	32,146	224,291	431,144
Avg. HH Income	\$225,463	\$231,594	\$231,225

EXTERIOR PHOTOS: UNIT 4 - 1,643± SF (FORMER JUDO SPACE)

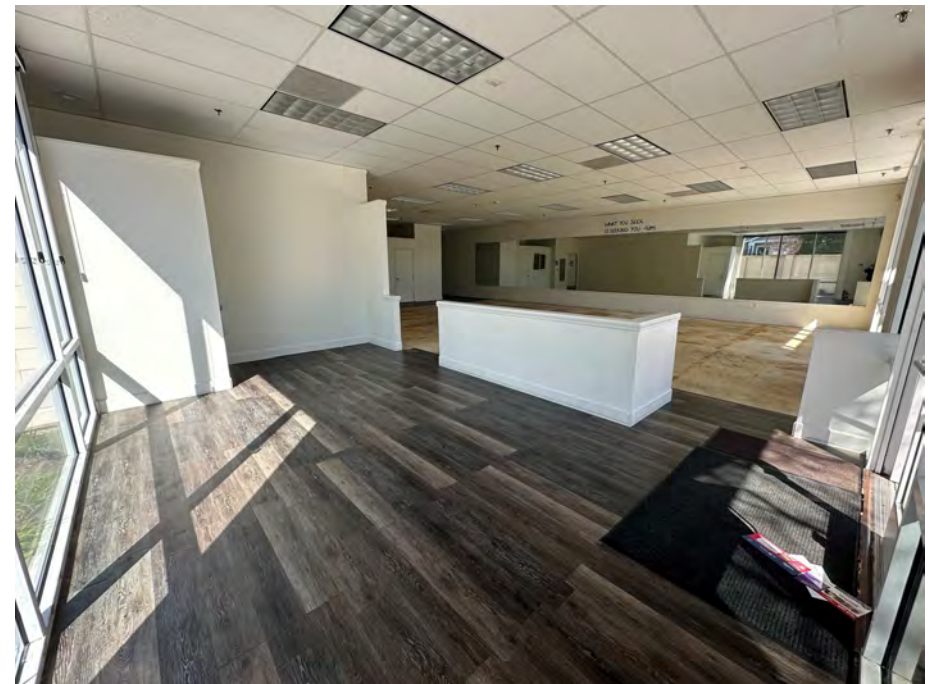


INTERIOR PHOTOS: UNIT 4 – 1,643± SF (FORMER JUDO SPACE)



The information contained herein has been obtained from sources we deem reliable. We cannot, however, assume responsibility for its accuracy.

INTERIOR PHOTOS: UNIT 4 – 1,643± SF (FORMER JUDO SPACE)



The information contained herein has been obtained from sources we deem reliable. We cannot, however, assume responsibility for its accuracy.

UNIT 2 - 2,561± SF (DRY CLEANERS SPACE)



The information contained herein has been obtained from sources we deem reliable. We cannot, however, assume responsibility for its accuracy.

AREA MAP



The information contained herein has been obtained from sources we deem reliable. We cannot, however, assume responsibility for its accuracy.



Matt Perez
Lic. #02017798
mperez@moinc.net
(408) 477-2516

Ryan Warner
Lic. #01397580
rwarner@moinc.net
(408) 477-2505

MEACHAM/OPPENHEIMER, INC.
8 N San Pedro St. #300
San Jose, CA 95110
Tel. 408.378.5900
www.moinc.net

