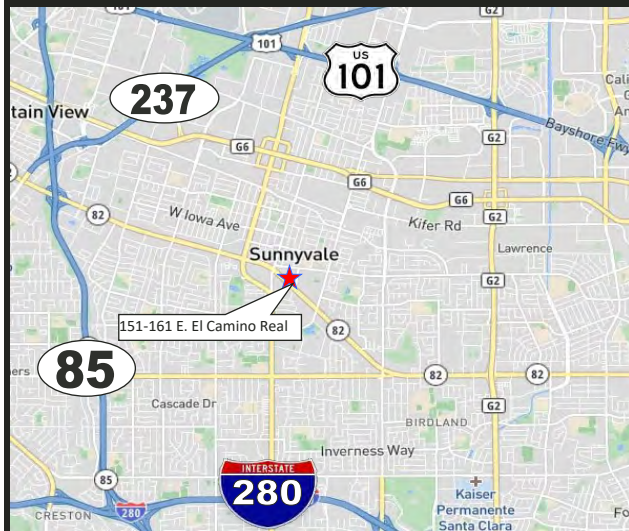


**157 E. EL CAMINO REAL  
SUNNYVALE, CALIFORNIA**

# Prime Retail Space For Lease on EL CAMINO REAL



## PROPERTY INFORMATION:

- Asking Rate: \$3.00 PSF, Plus NNN
- 3,000± SF, Available, Turn-Key Fitness
- Community Shopping Center Anchored by Sprouts, Dicks Sporting Goods, and Ross
- Affluent Trade Area and Workforce (Google, Apple, Yahoo, LinkedIn)
- Traffic Count: 43,000 ADT
- Contact Agent For Touring Instructions



## DEMOGRAPHICS:

| 2024            | <u>1 MILE</u> | <u>3 MILES</u> | <u>5 MILES</u> |
|-----------------|---------------|----------------|----------------|
| POPULATION:     | 35,502        | 233,600        | 484,900        |
| AVG. HH INCOME: | \$173,933     | \$187,610      | \$188,387      |



Meacham/Openheimer, Inc.  
8 N. San Pedro St., Suite 300  
San Jose, California 95110  
Tel: 408.378.5900  
www.moinc.net

**Ryan Warner**  
Lic. #01397580  
rwarner@moinc.net  
(408) 378-5900

# SITE PLAN



0





# PHOTOS: INTERIOR





# PHOTOS: EXTERIOR

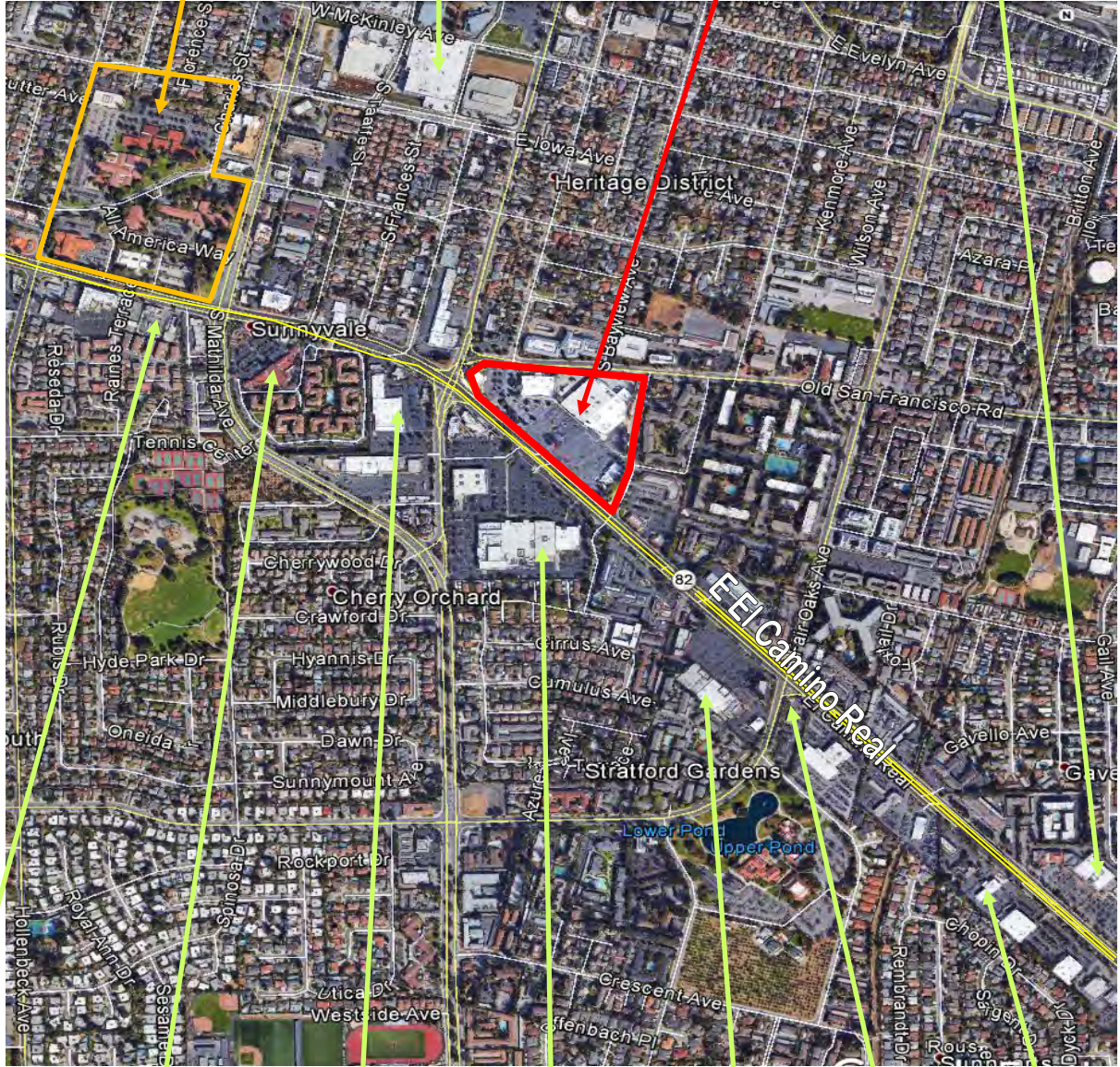
0





# 157 E. El Camino Real • Sunnyvale, California

Sunnyvale Civic Center



Meacham/Openheimer, Inc.  
 8 N. San Pedro St., Suite 300  
 San Jose, California 95110  
 Tel: 408.378.5900  
 www.moinc.net

Ryan Warner  
 Lic. #01397580  
 rwarner@moinc.net  
 (408) 378-5900