

AVAILABLE NOW!
2ND Floor Office Suite
Located Near Hwy 17 & Camden Ave



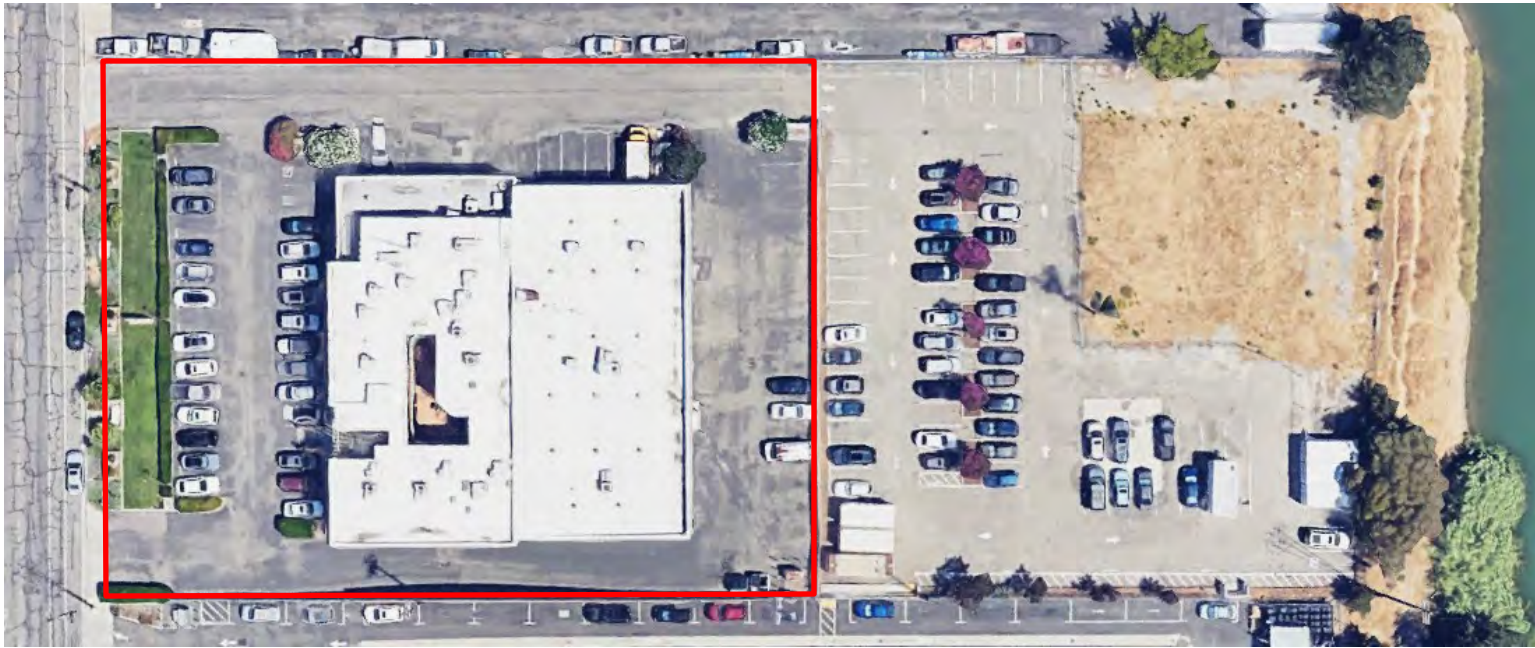
1350 Dell Ave, Campbell, CA

Bobby Facchino

Lic. #02178873
bobby@moinc.net
(408) 318-0623



AERIAL



The information contained herein has been obtained from sources we deem reliable. We cannot, however, assume responsibility for its accuracy.





Office Suite Available:

Suite 203 - 1000± SF

- 5 Private offices with kitchen/break room
- Owner will put in new carpets prior to move in date
- Asking rent is \$2.50 PSF MG (Modified Gross Lease)

SUITE 203: 1,000± SF



The information contained herein has been obtained from sources we deem reliable. We cannot, however, assume responsibility for its accuracy.

SUITE 203: 1,000± SF



The information contained herein has been obtained from sources we deem reliable. We cannot, however, assume responsibility for its accuracy.

SUITE 203: 1,000± SF



The information contained herein has been obtained from sources we deem reliable. We cannot, however, assume responsibility for its accuracy.

SIGN PLACEMENT and COURTYARD SPACE



FIBER INTERNET FOR THE WHOLE STREET AVAILABLE ON SITE



The information contained herein has been obtained from sources we deem reliable. We cannot, however, assume responsibility for its accuracy.

DEMOGRAPHICS



2024 SUMMARY	1-MILE	3-MILE	5-MILE
Population	22,045	190,614	457,391
Households	8,469	69,951	168,315
Average Household Size	2.58	2.7	2.69
Owner Occupied Housing Units	4,012	40,913	96,531
Renter Occupied Housing Units	4,457	29,038	71,784
Median Age	39.5	41.5	41.2
Median Household Income	\$146,560	\$156,188	\$156,029
Average Household Income	\$189,410	\$205,443	\$208,832

1350 Dell Ave



MEACHAM/OPPENHEIMER, INC.
8 N SAN PEDRO ST. #300
SAN JOSE, CA 95110
TEL. 408.378.5900
Www.moinc.net

Bobby Facchino

Lic. #02178873
bobby@moinc.net
(408) 318-0623