

1260 S. Bascom Ave  
San Jose, CA

# Leasing Incentives Available



## PROPERTY INFORMATION:

- Suite 1260 Available: 2,860± SF
- Low NNN (Approx. \$0.30)
- Rear Grade Level Roll Up Door
- Ample Parking
- Monument Signage
- *My Little Conservatory*
- Close Proximity to eBay, San Jose City College, and Santa Clara Valley Medical Center
- Major Thoroughfare: 47,000+ ADT
- **Tenant Leasing Incentives**
- \$1.50 PSF per month for 1st Year

## DEMOGRAPHICS:

	<u>1 MILE</u>	<u>3 MILES</u>	<u>5 MILES</u>
POPULATION:	27,986	248,279	612,425
AVG. HH INCOME:	\$133,623	\$152,152	\$154,276

## FOR MORE INFORMATION CONTACT:

**Ryan Warner**

Lic. #01397580

[rwarn@moinc.net](mailto:rwarn@moinc.net)

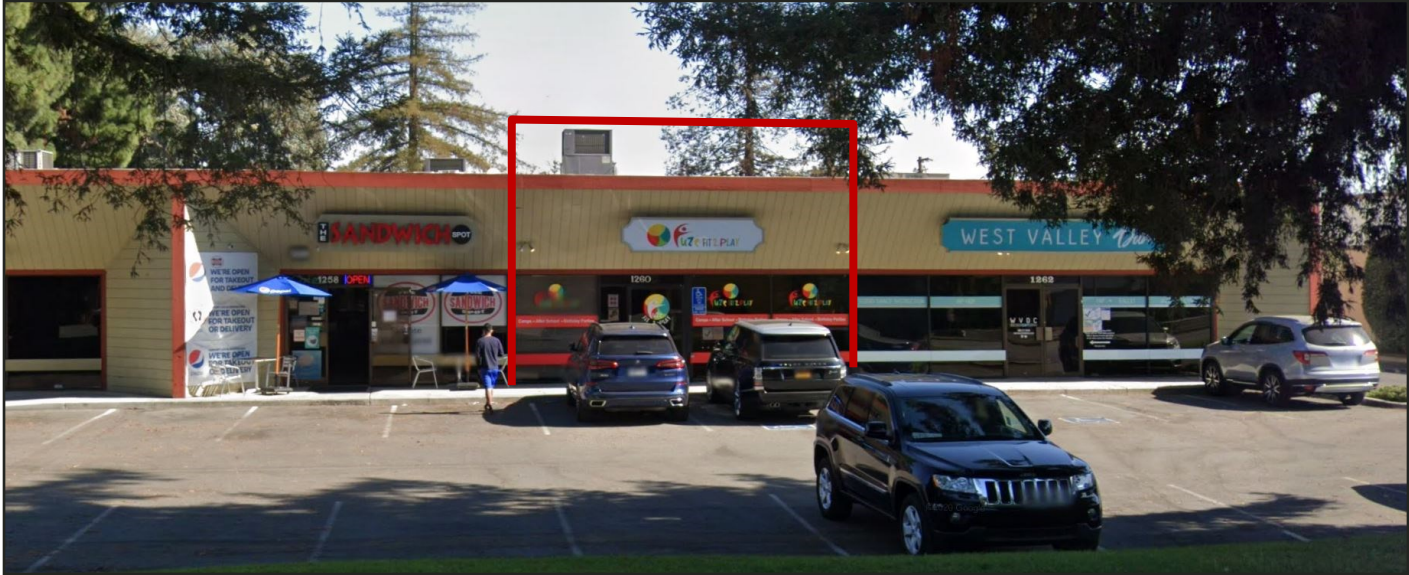
(408) 477-2505

**COMMERCIAL BROKERAGE | INVESTMENT SALES | PROPERTY MANAGEMENT**

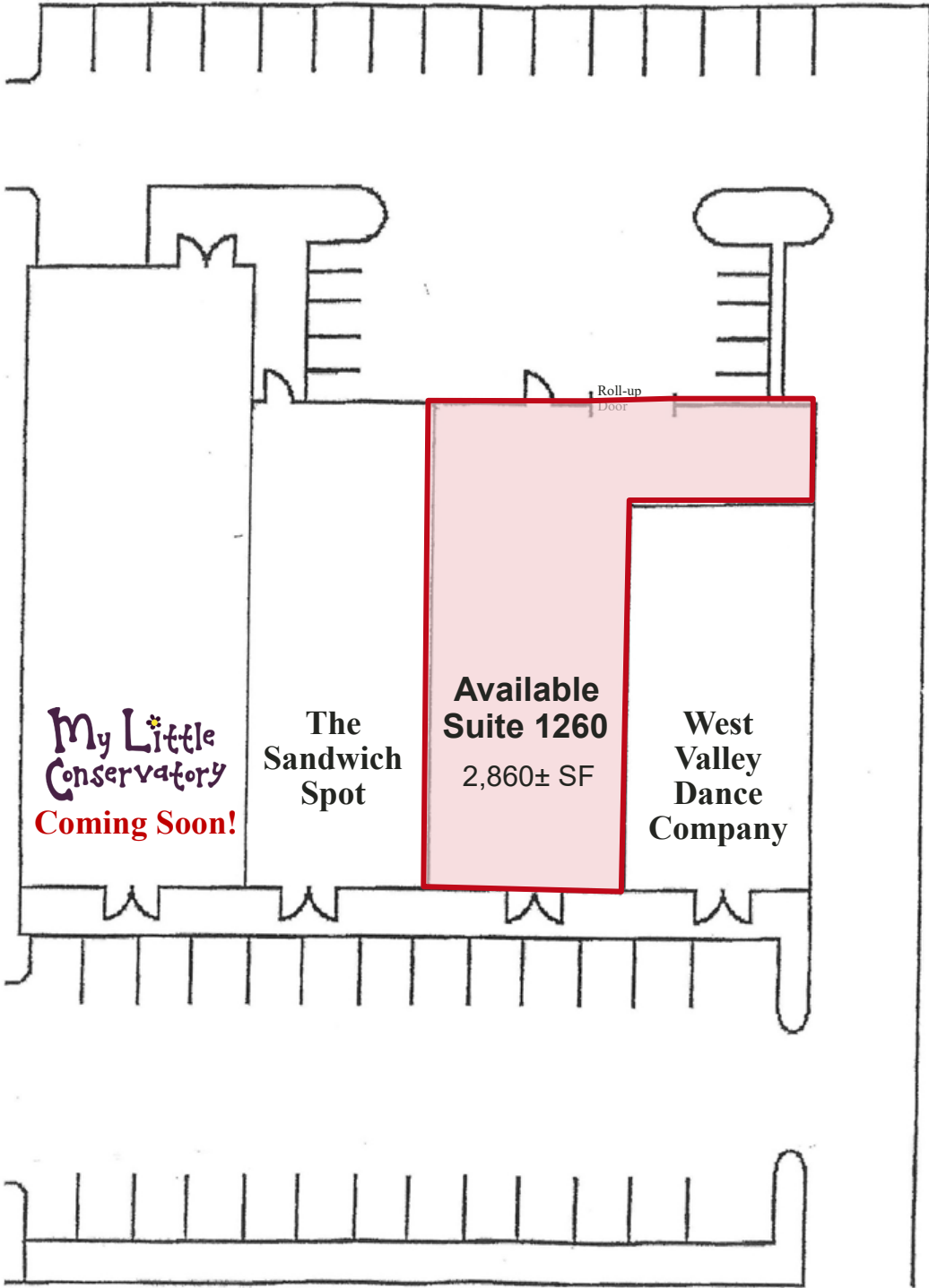
8 N. San Pedro Street, Suite 300 San Jose, California 95110  
Tel: 408.378.5900 [www.moinc.net](http://www.moinc.net)



1256-1260 S. Bascom Avenue • San Jose, California

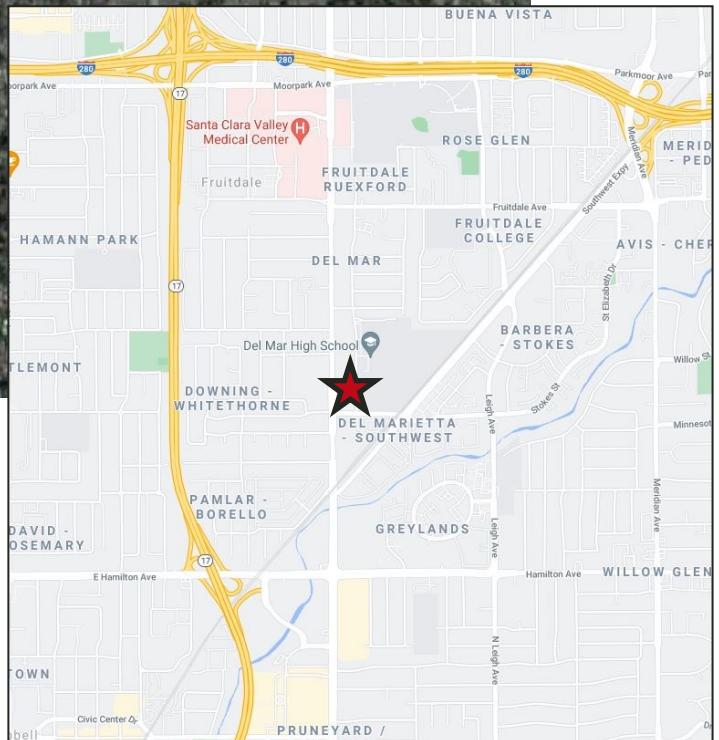


1256-1260 S. Bascom Avenue • San Jose, California



Bascom Avenue

# 1256-1260 S. Bascom Avenue • San Jose, California



**COMMERCIAL BROKERAGE | INVESTMENT SALES | PROPERTY MANAGEMENT**

8 N. San Pedro Street, Suite 300 San Jose, California 95110  
Tel: 408.378.5900 www.moinc.net